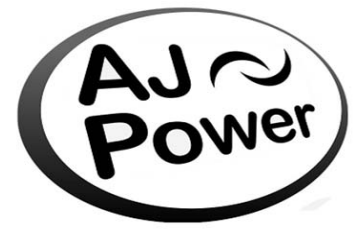
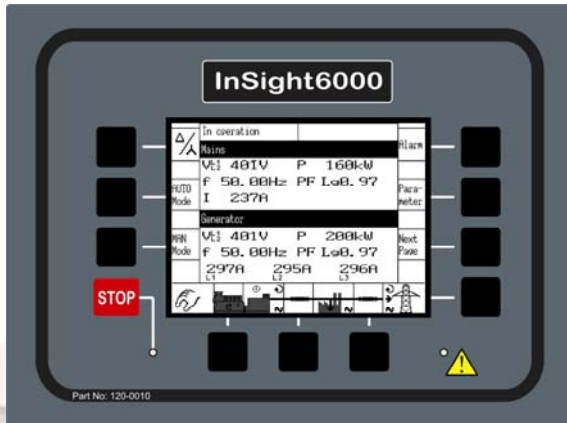




# AJ Power



## InSight6000 Synchronising Control System

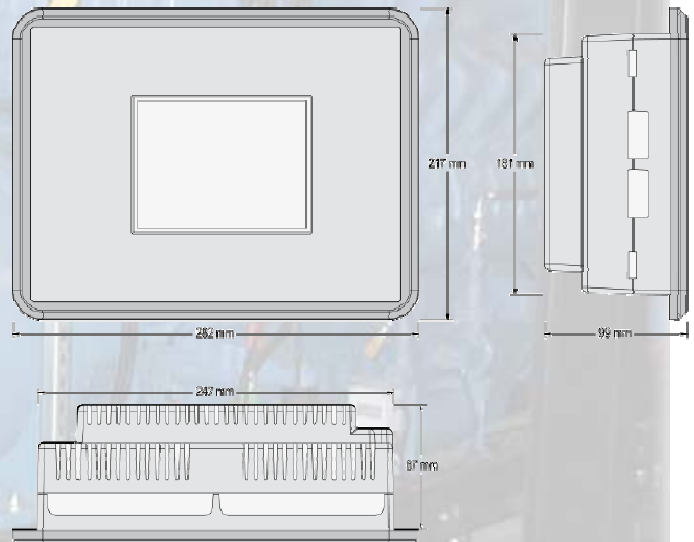


The InSight 6000 is a powerful and flexible solution to cater for a wide range of synchronising applications from only a single part number. Possible applications include, AMF, peak shaving, import/export control and the capability to synchronise up to 32 gensets in a network with automatic sequencing and load dependant start/stop.

The insight 6000 controller includes an intuitive LCD operator interface with soft-key push buttons for ease of navigation.

### Functions

- Operation modes: Auto, Stop, Manual and Load/No Load test modes via discrete input possible.
- Load-dependent Start/Stop with up to 32 generators.
- Breaker control: Slip frequency / phase matching synchronisation, open-close control, breaker monitoring.
- Load transfer features: open / closed transition, interchange, soft loading / soft unloading, mains parallel.
- Remote control via interface and discrete/analogue inputs for adjusting speed, frequency, voltage, power, reactive power and power factor set points.
- Complete integrated engine and generator protection as well as mains monitoring features.
- Scania S6, MTU ADEC, SISU EEM3 and Perkins ECU support.
- Configurable trip levels / delay timers / alarm classes for monitoring and protective functions.
- Clear text display and evaluation of up to 100 J1939 analogue values and diagnostic fault codes.
- Discrete and analogue I/O expansion board connectivity (IDK 1 or Phoenix Contact IL series).
- Alarm list with last 16 alarms and event list with 300 entries (FIFO) date and time stamped.



- Multi-lingual capability. (English, German, French, Spanish, Chinese, Japanese, Italian, Portuguese, Turkish, Russian, Polish)

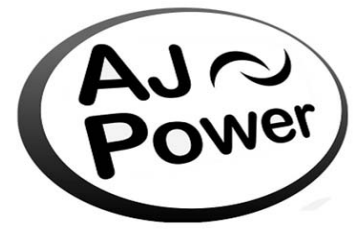
## AJ Power Limited

1 Charlestown Drive, Carn Industrial Area, Craigavon, BT63 5GA, Northern Ireland, United Kingdom  
Tel: +44 (0)28 3836 1000 Fax: +44 (0) 28 3836 1010 Email: [info@ajpower.net](mailto:info@ajpower.net)

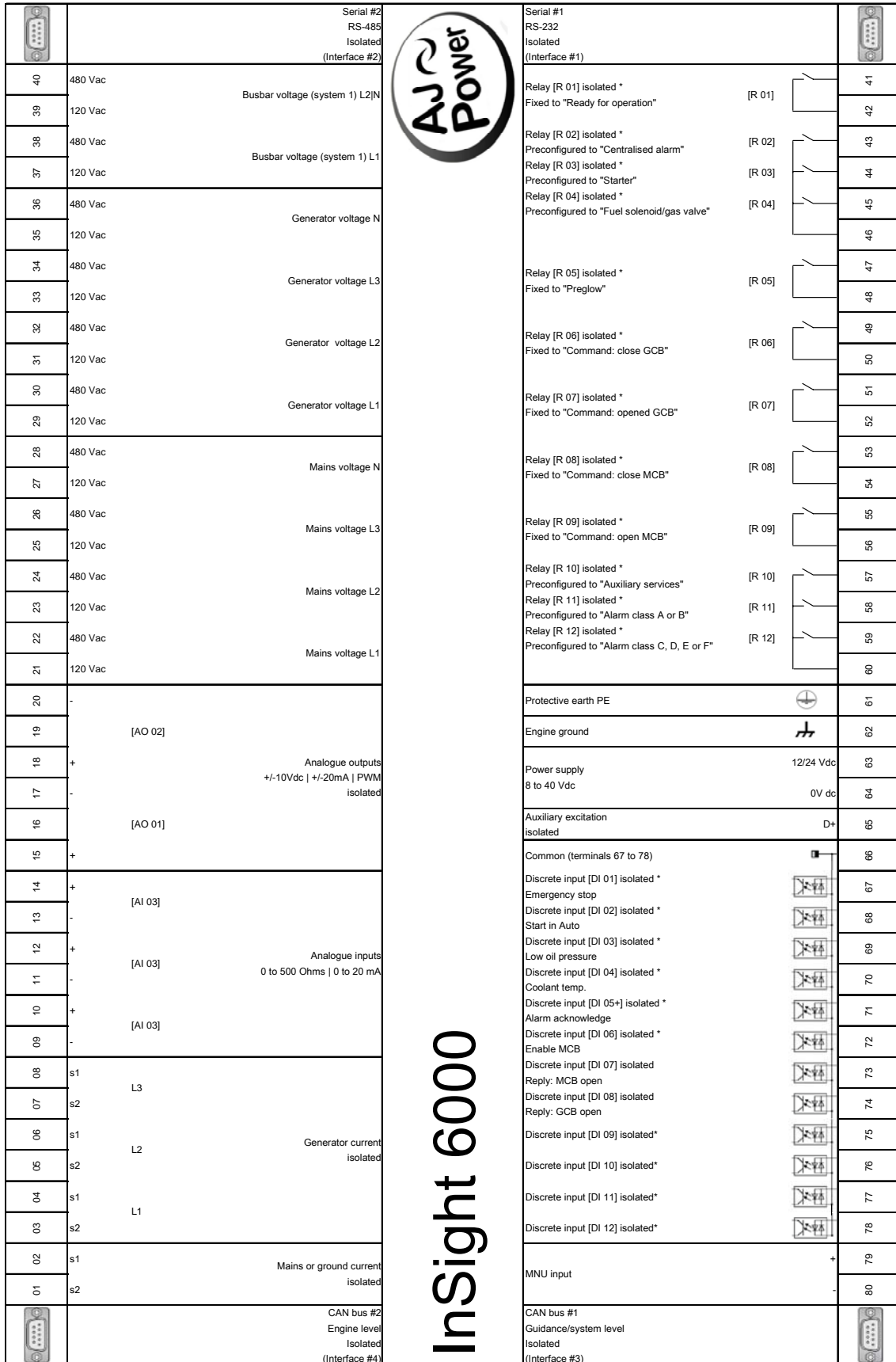
Company Registration No: NI 45303 VAT Registration No: GB 815 2976 14



# AJ Power



## Inputs and Outputs Diagram



InSight 6000

Subject to technical modifications

\*Configurable via LogicsManager

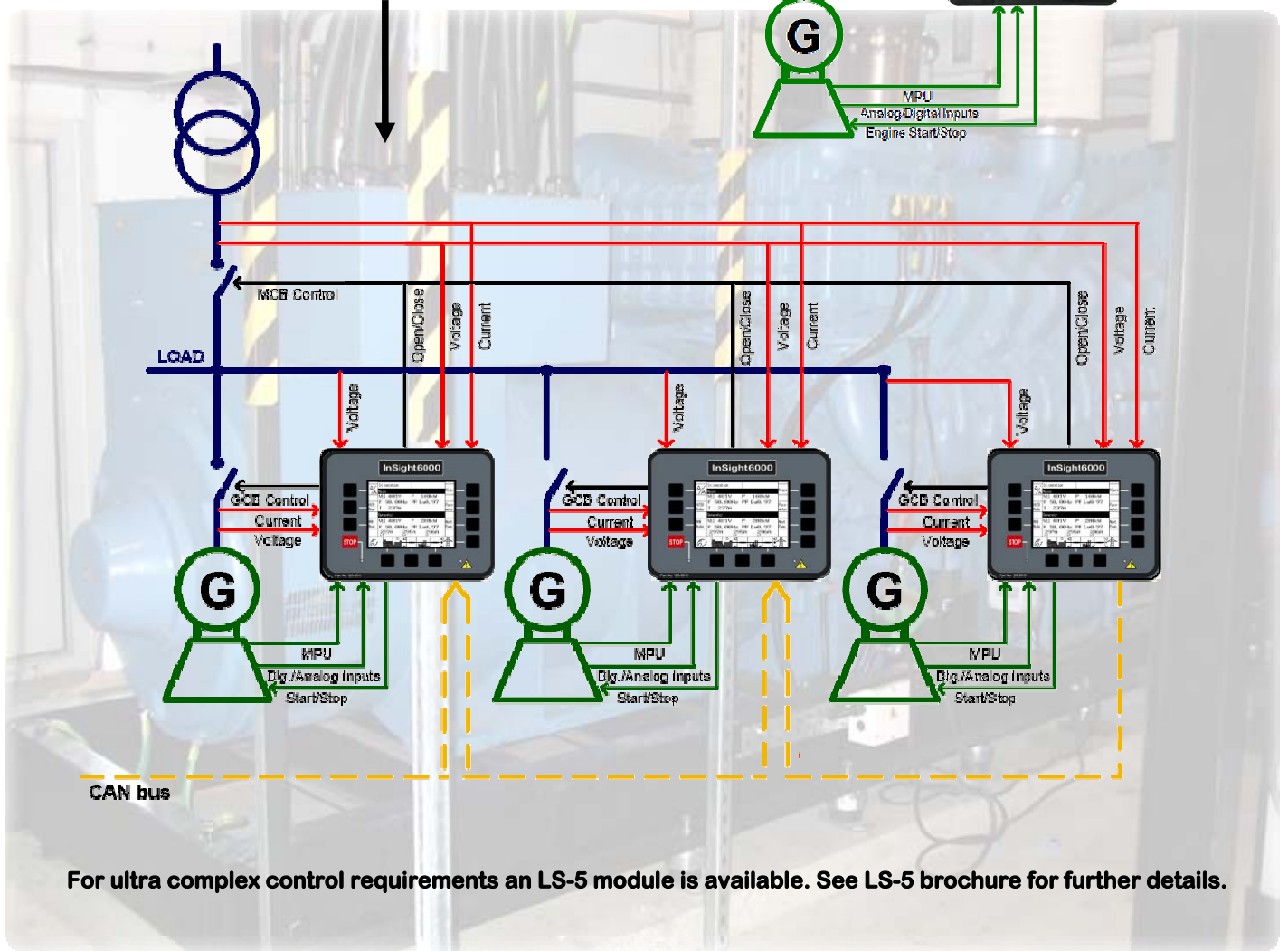
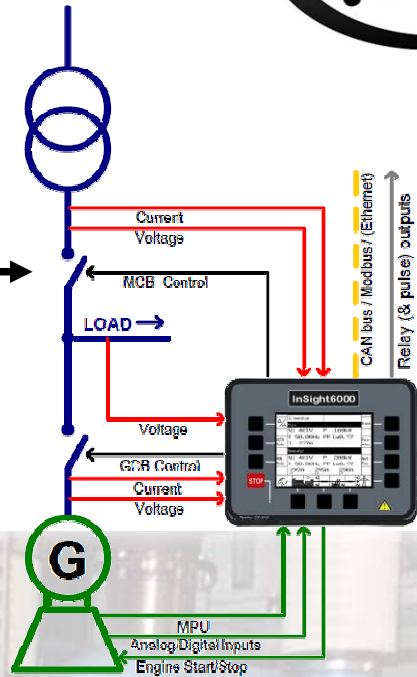


# AJ Power



Single set parallel to mains application

Multiple set parallel to mains application



For ultra complex control requirements an LS-5 module is available. See LS-5 brochure for further details.

## AJ Power Limited

1 Charlestown Drive, Carn Industrial Area, Craigavon, BT63 5GA, Northern Ireland, United Kingdom  
Tel: +44 (0)28 3836 1000 Fax: +44 (0) 28 3836 1010 Email: [info@ajpower.net](mailto:info@ajpower.net)

Company Registration No: NI 45303 VAT Registration No: GB 815 2976 14